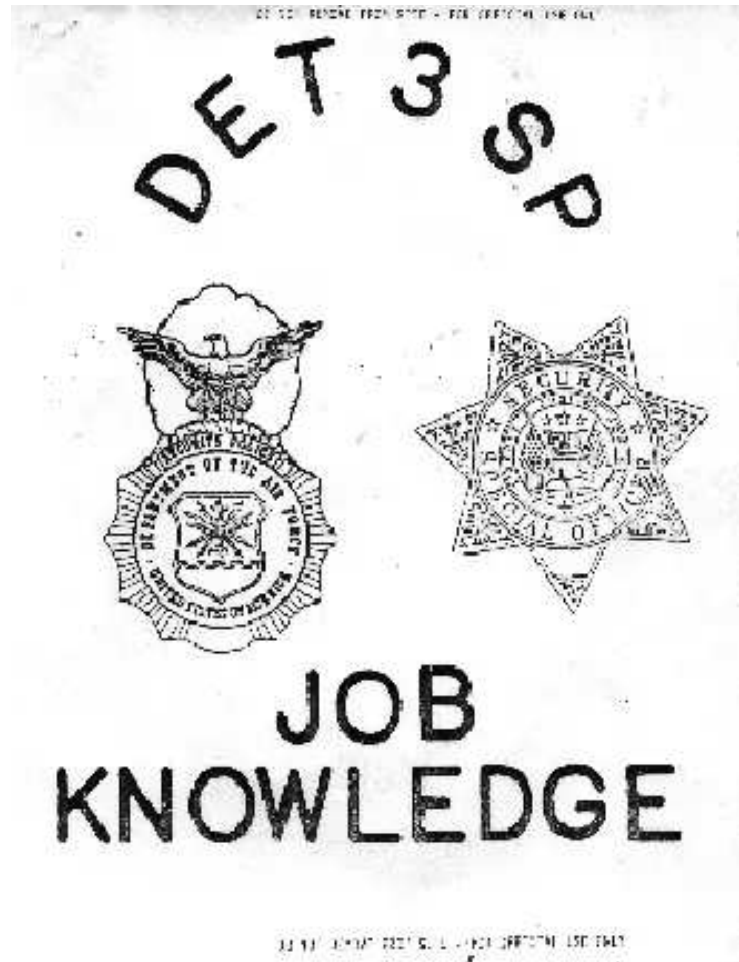


Groom Lake/Area 51 Security Manual



The following may be the Air Force manual mentioned in recent news articles about the ongoing Groom Lake hazardous waste lawsuit. The plaintiff's lawyer, Jonathan Turley, says the Air Force is seeking to classify this previously unclassified document, and he fears that government officials may soon seize his files relating to the case as a result.

We and our 41 IAB TCF partners store and access information on your device for the following purposes: store and/or access information on a device, advertising and content measurement, audience research, and services development, personalised advertising, and personalised content. ✕

Personal data may be processed to do the following: use precise geolocation data and actively scan device characteristics for identification.

Our third party IAB TCF partners may store and access information on your device such as IP address and device characteristics. Our IAB TCF Partners may process this personal data on the basis of legitimate interest, or with your consent. You may change or withdraw your preferences for this website at any time by clicking on the cookie icon or link; however, as a consequence, you may not see relevant ads or personalized content. You may change your settings at any time or accept the default settings. You may close this banner to continue with only essential cookies. [Privacy Policy](#)

[Your Privacy Choices](#)

[Third Parties](#)

- Storage
- Targeted Advertising
- Personalization
- Performance Cookies

Save Preferences

Accept All

Reject Non-Essential

Glenn Campbell
Area 51 Research Center
Rachel, NV 89001
June 18, 1995

Cover

DET 3 SP

JOB KNOWLEDGE

[Cover shows badges for "Security Police, Department of the Air Force, United States of America" and "Special Security Officer, Liberty and Justice for All." There is no mention of any facility name.]

PAGE 1

INTRODUCTION

THIS TRAINING/JOB KNOWLEDGE BOOKLET HAS BEEN ESTABLISHED TO ASSIST THE SECURITY PERSONNEL ASSIGNED TO THIS SQUADRON IN PERFORMING IN A MORE KNOWLEDGEABLE AND PROFESSIONAL MANNER. WHILE THE INFORMATION IS NOT ALL INCLUSIVE TO YOUR SPECIFIC JOB, IT WAS DEVELOPED IN THE SPIRIT TO HELP ANSWER THE QUESTIONS THAT YOU MIGHT HAVE WHEN PERFORMING YOUR DUTIES.

ALL INFORMATION CONTAINED WITHIN IS FOR OFFICIAL USE ONLY AND IS NOT TO LEAVE THE SITE.

We and our 41 IAB TCF partners store and access information on your device for the following purposes: store and/or access information on a device, advertising and content measurement, audience research, and services development, personalised advertising, and personalised content. ✕

Personal data may be processed to do the following: use precise geolocation data and actively scan device characteristics for identification.

Our third party IAB TCF partners may store and access information on your device such as IP address and device characteristics. Our IAB TCF Partners may process this personal data on the basis of legitimate interest, or with your consent. You may change or withdraw your preferences for this website at any time by clicking on the cookie icon or link; however, as a consequence, you may not see relevant ads or personalized content. You may change your settings at any time or accept the default settings. You may close this banner to continue with only essential cookies. [Privacy Policy](#)

[Your Privacy Choices](#)

[Third Parties](#)

- Storage
- Targeted Advertising
- Personalization
- Performance Cookies

Save Preferences

Accept All

Reject Non-Essential

2. TABLE OF CONTENTS
3. SECURITY MISSION - COVER STORY
4. SQUADRON POSITIONS
5. DUTY POSITIONS - QUALITY CONTROL EVALUATIONS
6. SECURITY CATEGORIES
7. SECURITY NET CALL SIGNS
8. LOCAL RADIO NET TERMINOLOGY
9. RESPONSE PRIORITY - ALARM CODES
10. FIRE RESPONSE UNIT LOCATIONS (RUNWAY OPERATIONS)
11. FIRE DEPARTMENT 10 CODES
12. FIRE DEPARTMENT CALL SIGNS - VEHICLE IDENTIFICATION
13. WALL SEARCH - HANDCUFF GUIDELINES
14. KNEELING SEARCH - HANDCUFF GUIDELINES
15. SECURITY POLICE EVACUATION RALLY POINT
16. FIELD SENSOR DIAGRAM
17. FIELD SENSOR OPERATION GUIDE
18. BLDG #269 RESPONSE GUIDE

We and our 41 IAB TCF partners store and access information on your device for the following purposes: store and/or access information on a device, advertising and content measurement, audience research, and services development, personalised advertising, and personalised content. ✕

Personal data may be processed to do the following: use precise geolocation data and actively scan device characteristics for identification.

Our third party IAB TCF partners may store and access information on your device such as IP address and device characteristics. Our IAB TCF Partners may process this personal data on the basis of legitimate interest, or with your consent. You may change or withdraw your preferences for this website at any time by clicking on the cookie icon or link; however, as a consequence, you may not see relevant ads or personalized content. You may change your settings at any time or accept the default settings. You may close this banner to continue with only essential cookies. [Privacy Policy](#)

[Your Privacy Choices](#)

[Third Parties](#)

- Storage
- Targeted Advertising
- Personalization
- Performance Cookies

Save Preferences

Accept All

Reject Non-Essential

SECURITY MISSION

TO DETECT, DETER AND DENY UNAUTHORIZED INDIVIDUALS ACCESS TO THIS AREA, MAINTAINING A SECURE ENVIRONMENT AND PRESERVING THE INTEGRITY OF THIS FACILITY. OUR SECURITY VIGILANCE PROTECTS RESOURCES FROM EXPOSURE, COMPROMISE, THEFT OR SABOTAGE.

COVER STORY

YOU ARE A MEMBER OF THE SECURITY FORCE PATROLLING THE NELLIS BOMBING RANGE. [ADVISE PERSONNEL TO DEPART] BECAUSE OF UNEXPLODED ORDINANCE, LOW FLYING AIRCRAFT AND STRAFING RUNS ARE CONDUCTED HERE.

NOTE: TRAINING, GOOD JUDGMENT AND COMMON SENSE MUST BE UTILIZED WHEN EVER YOU ENCOUNTER UNIDENTIFIED INDIVIDUALS OUT ON THE RANGE.

[Organization Chart. Poor copy. Questionable terms marked by "?".]

CHIEF, SECURITY POLICE

|

We and our 41 IAB TCF partners store and access information on your device for the following purposes: store and/or access information on a device, advertising and content measurement, audience research, and services development, personalised advertising, and personalised content. ✕

Personal data may be processed to do the following: use precise geolocation data and actively scan device characteristics for identification.

Our third party IAB TCF partners may store and access information on your device such as IP address and device characteristics. Our IAB TCF Partners may process this personal data on the basis of legitimate interest, or with your consent. You may change or withdraw your preferences for this website at any time by clicking on the cookie icon or link; however, as a consequence, you may not see relevant ads or personalized content. You may change your settings at any time or accept the default settings. You may close this banner to continue with only essential cookies. [Privacy Policy](#)

[Your Privacy Choices](#)

[Third Parties](#)

- Storage
- Targeted Advertising
- Personalization
- Performance Cookies

Save Preferences

Accept All

Reject Non-Essential

SOUTHEND PATROL

AN INITIAL QUALITY CONTROL EVALUATION WILL BE CONDUCTED ON INDIVIDUALS RELEASED FROM TRAINING AND AFTER WORKING FOR 30 DAYS ON FLIGHT. WHEN THIS EVALUATION IS COMPLETED AN ANNUAL EVALUATION WILL BE CONDUCTED ON THAT INDIVIDUAL FOR THE

~~ASSIGNED DUTY POSITION. AN EVALUATION WILL BE CONDUCTED IF AN INDIVIDUAL CHANGES DUTY POSITIONS AND IS CERTIFIED BY HIS SUPERVISOR FOR THE NEW POSITION. THE QC EVALUATION WILL CONSIST OF A THREE PHASE EVALUATION: ORAL, WRITTEN AND PRACTICAL. A MINIMUM OF SCORE OF 70% FOR THE ORAL, 70% FOR THE WRITTEN AND 80% FOR THE PRACTICAL HAS BEEN ESTABLISHED FOR ALL POSITIONS EXCEPT FOR THE SECURITY CONTROLLER, A SCORE OF 80% OVER ALL AREAS IS REQUIRED. ALL POSITIONS WILL TAKE A WEAPONS/USE OF FORCE TEST WHICH IS CORRECTABLE TO 100%.~~

PAGE 6

SECURITY CATEGORIES

SECURITY CATEGORIES ARE DIFFERENT POSTURES OF SECURITY REQUIRED TO MEET SECURITY OBJECTIVES OF DEPARTMENTAL PROGRAMS. THE POSTURES MAY EFFECT SITE OPERATIONS INVOLVING NON-PERMANENT PERSONNEL NOT CLEARED ON THAT PROGRAM. THE CATEGORIES ARE AS FOLLOWS:

CATEGORY 1: THIS IS THE SECURITY POSTURE DURING NON-DUTY HOURS WHEN PROGRAM ACTIVITIES ARE NOT IN OPERATION AND THE MAJORITY

We and our 41 IAB TCF partners store and access information on your device for the following purposes: store and/or access information on a device, advertising and content measurement, audience research, and services development, personalised advertising, and personalised content. ✕

Personal data may be processed to do the following: use precise geolocation data and actively scan device characteristics for identification.

Our third party IAB TCF partners may store and access information on your device such as IP address and device characteristics. Our IAB TCF Partners may process this personal data on the basis of legitimate interest, or with your consent. You may change or withdraw your preferences for this website at any time by clicking on the cookie icon or link; however, as a consequence, you may not see relevant ads or personalized content. You may change your settings at any time or accept the default settings. You may close this banner to continue with only essential cookies. [Privacy Policy](#)

[Your Privacy Choices](#)

[Third Parties](#)

- Storage
- Targeted Advertising
- Personalization
- Performance Cookies

Save Preferences

Accept All

Reject Non-Essential

PERSONNEL IS PROBABLE. NON-PERMANENT PERSONNEL NOT CLEARED FOR THAT PROGRAM WILL BE SEQUESTERED.

CATEGORY 3/4 WITH NIGHT TIME DEVIATIONS

DURING NIGHT HOURS, APPROVED PROGRAM PERSONNEL MAY IMPLEMENT CATEGORY 3 THROUGH SECURITY WHEN TEO IS NOT

~~MANNING THE CURRENT OPERATIONS CENTER (WHITE ROOM) HOWEVER, A NIGHT TIME CATEGORY 3 IMPLEMENTED BY THE PROGRAM PERSONNEL~~
IN THIS MANNER MUST TERMINATE THE CATEGORY 30 MINUTES PRIOR TO SUNRISE, UNLESS TEO CURRENT OPERATIONS (WHITE ROOM) IS MANNED AND OPERATING.

STANDARD DEVIATIONS: APPROVED PROGRAM PERSONNEL MAY REQUEST OR APPROVE A STANDARD DEVIATION TO CATEGORY 3. THE STANDARD DEVIATION ALLOWS NON PERMANENT PERSONNEL NOT CLEARED ON THAT PROGRAM TO MOVE WITHIN THE MAIN BASE AREA WITHOUT SEQUESTERING. OTHER VISITOR CONTROL AND ESCORT PROCEDURES STILL APPLY.

(EXCERPTED FROM DET 3 REG 205-3)

PAGE 7

SECURITY NET CALL SIGNS

UNI T

CALL SIGN

We and our 41 IAB TCF partners store and access information on your device for the following purposes: store and/or access information on a device, advertising and content measurement, audience research, and services development, personalised advertising, and personalised content. ✕

Personal data may be processed to do the following: use precise geolocation data and actively scan device characteristics for identification.

Our third party IAB TCF partners may store and access information on your device such as IP address and device characteristics. Our IAB TCF Partners may process this personal data on the basis of legitimate interest, or with your consent. You may change or withdraw your preferences for this website at any time by clicking on the cookie icon or link; however, as a consequence, you may not see relevant ads or personalized content. You may change your settings at any time or accept the default settings. You may close this banner to continue with only essential cookies. [Privacy Policy](#)

[Your Privacy Choices](#)

[Third Parties](#)

- Storage
- Targeted Advertising
- Personalization
- Performance Cookies

Save Preferences

Accept All

Reject Non-Essential

BACK GATE	SP #9
NORTH GATE	SP #10
MAIN GATE	SP #11
SOUTHEND PATROL	SP #12
PATROL SGT (CONTRACT)	SP #14
FLIGHT CHIEF (AF)	SP #15
SOUTH RANGE PATROL LEADER	SP #16/ #18/ #20
SOUTH RANGE PATROL MEMBER	SP #16A/ #18A/ #20A
NORTH RANGE PATROL LEADER	SP #17/ #19/ #21
NORTH RANGE PATROL MEMBER	SP #17A/ #19A/ #21A
PAX PAD	PAX #1/ #2/ #3
INVESTIGATIONS	INDIA #
SENSOR SECTION	SERRA #
SENSOR SECTION	SERRA #2
TRAINING	TANGO #
QUALITY CONTROL	QUEBEC CHARLIE #
VEHICLE MAINTENANCE NOC	VICTOR MIKE

We and our 41 IAB TCF partners store and access information on your device for the following purposes: store and/or access information on a device, advertising and content measurement, audience research, and services development, personalised advertising, and personalised content. ✕

Personal data may be processed to do the following: use precise geolocation data and actively scan device characteristics for identification.

Our third party IAB TCF partners may store and access information on your device such as IP address and device characteristics. Our IAB TCF Partners may process this personal data on the basis of legitimate interest, or with your consent. You may change or withdraw your preferences for this website at any time by clicking on the cookie icon or link; however, as a consequence, you may not see relevant ads or personalized content. You may change your settings at any time or accept the default settings. You may close this banner to continue with only essential cookies. [Privacy Policy](#)

[Your Privacy Choices](#)

[Third Parties](#)

- Storage
- Targeted Advertising
- Personalization
- Performance Cookies

Save Preferences

Accept All

Reject Non-Essential

BACK GATE

NORTH GATE

MAIN GATE

SITE

BALD MOUNTAIN

PAPOOSE MOUNTAIN

BACK GATE ROAD

LAKE BED ROAD

700 ROAD

VALLEY ROAD

SADDLE ROAD

GLIB ROAD

700 GATE

MINES

FIRE DEPARTMENT

FIRE UNITS

MEDICS

FIRST BASE

SECOND BASE

THIRD BASE

HOME PLATE/C-BASE

R-1 / R-7

P-1 / P-7

SUNRISE RD

SEASHORE RD

SUNDOWNER RD

FREEWAY

LEATHERSTRAP

HILLSIDE RD

DOUBLE 00

CAVES

PONY CONTROL

PONY #1, #2, #3, ETC

MAGIC SHIELD

We and our 41 IAB TCF partners store and access information on your device for the following purposes: store and/or access information on a device, advertising and content measurement, audience research, and services development, personalised advertising, and personalised content. ✕

Personal data may be processed to do the following: use precise geolocation data and actively scan device characteristics for identification.

Our third party IAB TCF partners may store and access information on your device such as IP address and device characteristics. Our IAB TCF Partners may process this personal data on the basis of legitimate interest, or with your consent. You may change or withdraw your preferences for this website at any time by clicking on the cookie icon or link; however, as a consequence, you may not see relevant ads or personalized content. You may change your settings at any time or accept the default settings. You may close this banner to continue with only essential cookies. [Privacy Policy](#)

[Your Privacy Choices](#)

[Third Parties](#)

Storage

Targeted Advertising

Personalization

Performance Cookies

Save Preferences

Accept All

Reject Non-Essential

C- 130	VESPA #___
C- 140	WAXY #___
DRONE CONTROL CENTER	DCC
WEAPONS TEST RANGE	WTR
RADAR DISH SOUTH OF SUNDOWNER RD, WEST OF P- I OBSERVATORY, SOUTH OF SUNDOWNER ROAD, WEST OF P- I	CAREY SITE COMET #
MICROWAVE DISH NORTH EAST OF SITE	EDDY SITE
SECURITY CONDITION DUE TO SATELLITES OVERHEAD	NIGHTSHOT CONDITION
QUICK KILL RADAR SITES	QK #1, #2, #3
BLDG AT EXTREME SOUTH OF SITE	BEACON

PAGE 9

RESPONSE PRIORITY LIST

THE FOLLOWING LIST CONTAINS FACILITIES THAT PATROLS WILL RESPOND TO IN THE GIVEN PRIORITY OF THE ALARM, #1 BEING THE HIGHEST PRIORITY FOR THE RESPONSE OF PATROLS:

PRI OR I TY	FAC I L I TY	BLDG NUMBER
-----	-----	-----

We and our 41 IAB TCF partners store and access information on your device for the following purposes: store and/or access information on a device, advertising and content measurement, audience research, and services development, personalised advertising, and personalised content. ✕

Personal data may be processed to do the following: use precise geolocation data and actively scan device characteristics for identification.

Our third party IAB TCF partners may store and access information on your device such as IP address and device characteristics. Our IAB TCF Partners may process this personal data on the basis of legitimate interest, or with your consent. You may change or withdraw your preferences for this website at any time by clicking on the cookie icon or link; however, as a consequence, you may not see relevant ads or personalized content. You may change your settings at any time or accept the default settings. You may close this banner to continue with only essential cookies. [Privacy Policy](#)

[Your Privacy Choices](#)

[Third Parties](#)

- Storage
- Targeted Advertising
- Personalization
- Performance Cookies

Save Preferences

Accept All

Reject Non-Essential

12	DYCOMB/ PROJECT #100	#130~31
13	BLDG #470 VAULT	#47~ RM 6
14	PROGRAM SECURITY	#484
15	HANGERS 9- 12 & THE LEAN- TO	#482
16	HANGERS 13- 14 & THE LEAN- TO	#480
17	HANGERS 15- 16	#480
18	SAM S PLACE (BAR/MWR OFFI CE)	#170
19	CONSOLI DATED SERVI CES FACI LI TY (REECO)	#275

IF MORE THAN ONE ALARM IS GENERATED FROM THESE FACILITIES, PATROLS WILL BE DISPATCHED IN ACCORDANCE WITH THEIR PRIORITY.

IF MORE THAN ONE ALARM IS GENERATED FROM THESE FACILITIES AND ANY OTHER ALARMED FACILITY, THE PATROLS WILL BE DISPATCHED TO THE LISTED FACILITIES FIRST AND THEN TO THE SECOND ALARMED FACILITY. (SIMULTANEOUSLY, IF ADEQUATE PATROLS ARE AVAILABLE)

ALARM CODES

THE FOLLOWING CODES ARE USED TO IDENTIFY A TYPE OF ALARM THAT YOU ARE TO KNOW AND UNDERSTAND:

CODE	TYPE OF ALARM
----	-----
403	HOLD UP ALARM

We and our 41 IAB TCF partners store and access information on your device for the following purposes: store and/or access information on a device, advertising and content measurement, audience research, and services development, personalised advertising, and personalised content. ✕

Personal data may be processed to do the following: use precise geolocation data and actively scan device characteristics for identification.

Our third party IAB TCF partners may store and access information on your device such as IP address and device characteristics. Our IAB TCF Partners may process this personal data on the basis of legitimate interest, or with your consent. You may change or withdraw your preferences for this website at any time by clicking on the cookie icon or link; however, as a consequence, you may not see relevant ads or personalized content. You may change your settings at any time or accept the default settings. You may close this banner to continue with only essential cookies. [Privacy Policy](#)

[Your Privacy Choices](#)

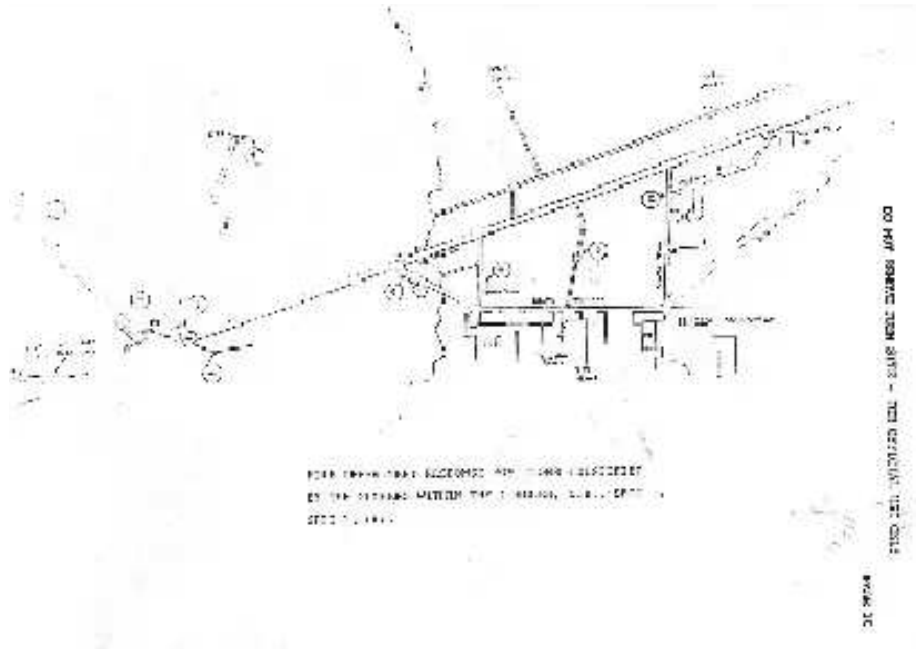
[Third Parties](#)

- Storage
- Targeted Advertising
- Personalization
- Performance Cookies

Save Preferences

Accept All

Reject Non-Essential



Text on page...

FIRE DEPARTMENT RESPONSE POSITIONS IDENTIFIED BY THE NUMBERS WITHIN THE CIRCLES, i.e., SPOT 1, SPOT 2, etc.

PAGE 11

FIRE DEPARTMENT "10" CODES

- | | |
|-------|---------------------------------------|
| 10- 1 | RECEPTI ON POOR (CAN NOT UNDERSTAND) |
| 10- 2 | RECEPTI ON GOOD |
| 10- 3 | STOP TRANSM TTI NG |

We and our 41 IAB TCF partners store and access information on your device for the following purposes: store and/or access information on a device, advertising and content measurement, audience research, and services development, personalised advertising, and personalised content. ✕

Personal data may be processed to do the following: use precise geolocation data and actively scan device characteristics for identification.

Our third party IAB TCF partners may store and access information on your device such as IP address and device characteristics. Our IAB TCF Partners may process this personal data on the basis of legitimate interest, or with your consent. You may change or withdraw your preferences for this website at any time by clicking on the cookie icon or link; however, as a consequence, you may not see relevant ads or personalized content. You may change your settings at any time or accept the default settings. You may close this banner to continue with only essential cookies. [Privacy Policy](#)

[Your Privacy Choices](#)

[Third Parties](#)

- Storage
- Targeted Advertising
- Personalization
- Performance Cookies

Save Preferences

Accept All

Reject Non-Essential

10- 15	FI NI SHED W TH LAST ASSI GNMENT
10- 16	DI SREGARD LAST ASSI GNMENT
10- 17	MAI NTAI N RAD I O SI LENCE
10- 18	I NVOLVED I N ACCI DENT
10- 19	RETURN OR RETURNI NG TO STATI ON
10- 20	WHAT I S YOUR LOCATI ON
10- 21	RADI O CHECK
10- 22	ENGI NE RUN
10- 23	FUEL SPI LL
10- 24	CHOW HALL
10- 25	REFUEL/ DEFUEL OPERATI ON
10- 27	AI RLI FT STANDBY
10- 28	FI RE VEH CLE MECHAN I CAL PROBLEM
10- 29	UPDATE "POT LI D"
10- 30	STANDBY BLDG #430
10- 43	STANDBY BLDG #443
10- 51	TYPE I I

We and our 41 IAB TCF partners store and access information on your device for the following purposes: store and/or access information on a device, advertising and content measurement, audience research, and services development, personalised advertising, and personalised content. ✕

Personal data may be processed to do the following: use precise geolocation data and actively scan device characteristics for identification.

Our third party IAB TCF partners may store and access information on your device such as IP address and device characteristics. Our IAB TCF Partners may process this personal data on the basis of legitimate interest, or with your consent. You may change or withdraw your preferences for this website at any time by clicking on the cookie icon or link; however, as a consequence, you may not see relevant ads or personalized content. You may change your settings at any time or accept the default settings. You may close this banner to continue with only essential cookies. [Privacy Policy](#)

[Your Privacy Choices](#)

[Third Parties](#)

- Storage
- Targeted Advertising
- Personalization
- Performance Cookies

Save Preferences

Accept All

Reject Non-Essential

FIRE DEPT PERSONNEL IDENTIFICATION - VEHICLE CALL SIGNS

CALL SIGN	VEHICLE TYPE	PURPOSE
-----	-----	-----
PAINTED PONY	P/ U	FI RE SPECI ALI ST
PONY 21	P/ U	FI RE CHI EF
PONY 30	P/ U	DEPUTY CHI EF
PONY 20	P/ U	ASSI STANT CHI EF
OPERATI ONS		
PONY 1	P- 20	SHI FT SUPERVI SOR
PONY 2	VAN	MOBI LE COMMAND POST
CRASH/ FI RE/ RESCUE		
PONY 3	P- 1 9	CFR
PONY 4	P- 1 9	CFR
PONY 5	P- 1 9	CFR
PONY 6	P- 1 9	CFR
PONY 7	P- 2	CFR
PONY 8	P- 2	CFR

We and our 41 IAB TCF partners store and access information on your device for the following purposes: store and/or access information on a device, advertising and content measurement, audience research, and services development, personalised advertising, and personalised content. ✕

Personal data may be processed to do the following: use precise geolocation data and actively scan device characteristics for identification.

Our third party IAB TCF partners may store and access information on your device such as IP address and device characteristics. Our IAB TCF Partners may process this personal data on the basis of legitimate interest, or with your consent. You may change or withdraw your preferences for this website at any time by clicking on the cookie icon or link; however, as a consequence, you may not see relevant ads or personalized content. You may change your settings at any time or accept the default settings. You may close this banner to continue with only essential cookies. [Privacy Policy](#)

[Your Privacy Choices](#)

[Third Parties](#)

- Storage
- Targeted Advertising
- Personalization
- Performance Cookies

Save Preferences

Accept All

Reject Non-Essential

PONY 22	UNI - MDG	BRUSH
PONY 23	530- B	BRUSH
PONY 24	530- B	BRUSH

SPECIAL ASSIGNMENT VEHICLES

PONY 31	P/ U	NIGHT CREW
TLR 1	TRAILER	MONITOR UNIT
TLR 2	TRAILER	FAN UNIT
TLR 3	TRAILER	HAZ MAT UNIT

AUXILIARY VEHICLES

PONY 46	P- 4	SPARE CFR
PONY 44	P- 4	SPARE CFR
PONY 43	P- 4	SPARE CFR

PAGE 13

WALL SEARCH/HANDCUFFING GUIDELINE

RIGHT SIDE

SUSPECT'S HEAD IS TO THE LEFT

PATROLMAN'S FEET IN THE PROPER POSITION

We and our 41 IAB TCF partners store and access information on your device for the following purposes: store and/or access information on a device, advertising and content measurement, audience research, and services development, personalised advertising, and personalised content. ✕

Personal data may be processed to do the following: use precise geolocation data and actively scan device characteristics for identification.

Our third party IAB TCF partners may store and access information on your device such as IP address and device characteristics. Our IAB TCF Partners may process this personal data on the basis of legitimate interest, or with your consent. You may change or withdraw your preferences for this website at any time by clicking on the cookie icon or link; however, as a consequence, you may not see relevant ads or personalized content. You may change your settings at any time or accept the default settings. You may close this banner to continue with only essential cookies. [Privacy Policy](#)

[Your Privacy Choices](#)

[Third Parties](#)

- Storage
- Targeted Advertising
- Personalization
- Performance Cookies

Save Preferences

Accept All

Reject Non-Essential

PATROLMAN'S FEET IN THE PROPER POSITION
HANDCUFFS PLACED ON SUSPECT PROPERLY

REMOVING THE HANDCUFFS

SUSPECT IN ON KNEES
PATROLMAN MAINTAINS CONTROL OF THE CUFFS

THE FIRST HANDCUFF IS REMOVED AND LOCKED IMMEDIATELY.
THE SECOND HANDCUFF IS REMOVED AND THE PATROLMAN STEPS AWAY
FROM THE SUSPECT THEN LOCKS THE HANDCUFF

PAGE 14

KNEELING SEARCH/HANDCUFFING GUIDELINE

HANDCUFFING

SUSPECT ON KNEES
PATROLMAN APPLIES THE CHOKE HOLD
PATROLMAN'S FEET IN THE PROPER POSITION
HANDCUFFS PLACED ON PROPERLY

RIGHT SIDE

SUSPECT'S HANDS ON THE OUTSIDE OF THE PATROLMAN'S LEFT LEG
PATROLMAN'S LEFT HAND AT THE BASE OF THE SUSPECT'S NECK, THUMB
DOWN
PULL SUSPECT AWAY FROM THE UPRIGHT OBJECT, RESTING THE
SUSPECT'S WEIGHT ON THE PATROLMAN'S LEFT LEG

We and our 41 IAB TCF partners store and access information on your device for the following purposes: store and/or access information on a device, advertising and content measurement, audience research, and services development, personalised advertising, and personalised content. ✕

Personal data may be processed to do the following: use precise geolocation data and actively scan device characteristics for identification.

Our third party IAB TCF partners may store and access information on your device such as IP address and device characteristics. Our IAB TCF Partners may process this personal data on the basis of legitimate interest, or with your consent. You may change or withdraw your preferences for this website at any time by clicking on the cookie icon or link; however, as a consequence, you may not see relevant ads or personalized content. You may change your settings at any time or accept the default settings. You may close this banner to continue with only essential cookies. [Privacy Policy](#)

[Your Privacy Choices](#)

[Third Parties](#)

- Storage
- Targeted Advertising
- Personalization
- Performance Cookies

Save Preferences

Accept All

Reject Non-Essential

REMOVING THE HANDCUFFS

SUSPECT ON KNEES

PATROLMAN MAINTAINS CONTROL OF THE HANDCUFFS

THE FIRST HANDCUFF IS REMOVED AND LOCKED IMMEDIATELY

THE SECOND HANDCUFF IS REMOVED AND THE PATROLMAN STEPS AWAY FROM THE SUSPECT THEN LOCKS THE HANDCUFF

PAGE 15

.

[Map of inner area of base. Poor copy.]

Text on page...

THE RALLY AREA FOR OFF DUTY SECURITY PERSONNEL IS ON THE EAST SIDE OF BLDG #299 IN THE SQUARE IDENTIFIED WITH THE LETTER "D" (Ref SPOI 355-1, para 1b(3))

PAGE 16



We and our 41 IAB TCF partners store and access information on your device for the following purposes: store and/or access information on a device, advertising and content measurement, audience research, and services development, personalised advertising, and personalised content. ✕

Personal data may be processed to do the following: use precise geolocation data and actively scan device characteristics for identification.

Our third party IAB TCF partners may store and access information on your device such as IP address and device characteristics. Our IAB TCF Partners may process this personal data on the basis of legitimate interest, or with your consent. You may change or withdraw your preferences for this website at any time by clicking on the cookie icon or link; however, as a consequence, you may not see relevant ads or personalized content. You may change your settings at any time or accept the default settings. You may close this banner to continue with only essential cookies. [Privacy Policy](#)

[Your Privacy Choices](#)

[Third Parties](#)

- Storage
- Targeted Advertising
- Personalization
- Performance Cookies

Save Preferences

Accept All

Reject Non-Essential

(ammø can)

ANTENNA CONNECTED TO J 6

BATTERY CONNECTED TO J 5

PROBES CONNECTED TO J 1 & J 2

J 4 J 6

SENSOR TRANSMITTER

(name plate)

J 5 J 1 J 2 J 3

SENSOR CANISTER

(TOP VIEW)

J 1 - SENSOR

J 2 - SENSOR 2

J 3 - SENSOR (plugged)

J 4 - INHIBIT

J 5 - +12V INPUT

J 6 - ANT- TX

We and our 41 IAB TCF partners store and access information on your device for the following purposes: store and/or access information on a device, advertising and content measurement, audience research, and services development, personalised advertising, and personalised content. ✕

Personal data may be processed to do the following: use precise geolocation data and actively scan device characteristics for identification.

Our third party IAB TCF partners may store and access information on your device such as IP address and device characteristics. Our IAB TCF Partners may process this personal data on the basis of legitimate interest, or with your consent. You may change or withdraw your preferences for this website at any time by clicking on the cookie icon or link; however, as a consequence, you may not see relevant ads or personalized content. You may change your settings at any time or accept the default settings. You may close this banner to continue with only essential cookies. [Privacy Policy](#)

[Your Privacy Choices](#)

[Third Parties](#)

Storage

Targeted Advertising

Personalization

Performance Cookies

Save Preferences

Accept All

Reject Non-Essential

SIGNAL AND DISPLAYS IT ON THE COLOR MONITOR AND THE VT220 SCREEN.

NOTE #1: THE PROBES SHOULD BE BURIED/COVERED COMPLETELY WITH DIRT AND THE FLAT END FACING THE ROADWAY.

NOTE #2: THE ANTENNA IS NORMALLY MOUNTED TO THE CANISTER BUT IT CAN BE MOUNTED TO A STAKE FOR BETTER TRANSMITTING CAPABILITIES.

C. PATROL PROCEDURES: WHEN A PATROL IS DISPATCHED TO A SENSOR TO DISCONNECT IT DUE TO NUMEROUS ALARMS, THEY WILL DISCONNECT THE BATTERY SUPPLY FROM THE BATTERY. IF YOU DISCONNECT IT FROM THE CANISTER (J5+12V INPUT) INSURE YOU REPLACE THE PROTECTIVE CAP ON THE 'J5' CONNECTOR. DO NOT DISCONNECT ANYTHING ELSE UNLESS TOLD BY THE SENSOR SECTION PERSONNEL.

NOTE #1: IF A PROBE IS LAYING SIDEWAYS, REPOSITION IT SO THE FLAT SIDE IS FACING THE ROADWAY.

NOTE #2: IF ANY OF THE CABLES ARE CHEWED UP OR MANGLED, NOTIFY THE SENSOR SECTION PERSONNEL (IN PERSON, ANNOTATION ON THE ACTIVITY LOG OR LEAVE A NOTE).

D. IDENTIFYING THE SENSOR: CURRENTLY AS YOU APPROACH THE GENERAL AREA OF A SENSOR THERE SHOULD BE A STAKE PAINTED WITH ORANGE PAINT ON ONE SIDE. WITHIN 20 FEET OF THAT STAKE YOU SHOULD FIND THE SENSOR.

We and our 41 IAB TCF partners store and access information on your device for the following purposes: store and/or access information on a device, advertising and content measurement, audience research, and services development, personalised advertising, and personalised content. ✕

Personal data may be processed to do the following: use precise geolocation data and actively scan device characteristics for identification.

Our third party IAB TCF partners may store and access information on your device such as IP address and device characteristics. Our IAB TCF Partners may process this personal data on the basis of legitimate interest, or with your consent. You may change or withdraw your preferences for this website at any time by clicking on the cookie icon or link; however, as a consequence, you may not see relevant ads or personalized content. You may change your settings at any time or accept the default settings. You may close this banner to continue with only essential cookies. [Privacy Policy](#)

[Your Privacy Choices](#)

[Third Parties](#)

Storage

Targeted Advertising

Personalization

Performance Cookies

Save Preferences

Accept All

Reject Non-Essential

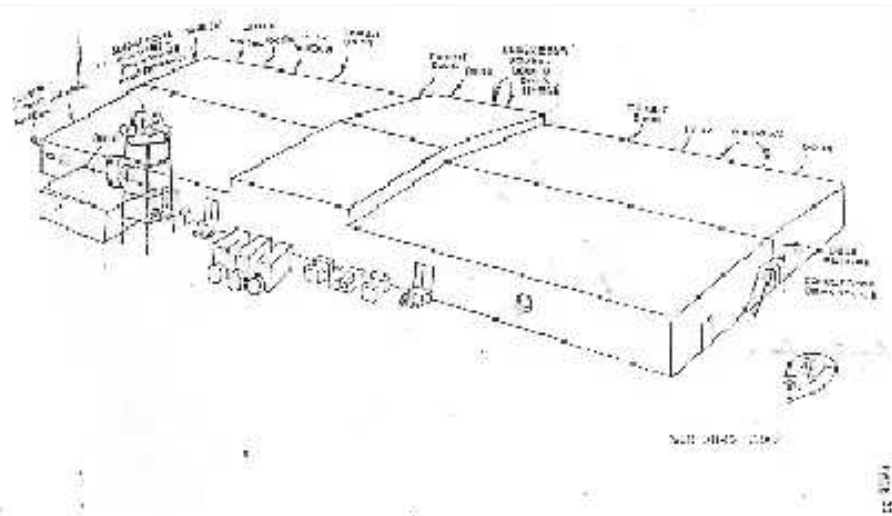
AMBULANCE FIRE STATION | POLE | DOOR | BACK DOOR | DOOR | AIR
CONDITION EQUIP | MAIN DOOR | FLAG POLE | CHOW HALL PARKING |
DOOR | DOOR | POLE

Writing in lower left corner is indecipherable

PAGE 19

[Floor plan of Building 299.]

PAGE 20



BUILDING 299

Labels on each side of building, clockwise starting in front left...

We and our 41 IAB TCF partners store and access information on your device for the following purposes: store and/or access information on a device, advertising and content measurement, audience research, and services development, personalised advertising, and personalised content. ✕

Personal data may be processed to do the following: use precise geolocation data and actively scan device characteristics for identification.

Our third party IAB TCF partners may store and access information on your device such as IP address and device characteristics. Our IAB TCF Partners may process this personal data on the basis of legitimate interest, or with your consent. You may change or withdraw your preferences for this website at any time by clicking on the cookie icon or link; however, as a consequence, you may not see relevant ads or personalized content. You may change your settings at any time or accept the default settings. You may close this banner to continue with only essential cookies. [Privacy Policy](#)

[Your Privacy Choices](#)

[Third Parties](#)

- Storage
- Targeted Advertising
- Personalization
- Performance Cookies

Save Preferences

Accept All

Reject Non-Essential

STANDARD OPERATING PROCEDURE
MOVEMENT OF TEST ARTICLES

1. This Standard Operating Procedure is intended to describe instructions for the safe and secure transportation of the test articles by members of the USAFO Test Force. It is further intended to provide information to those site organizations involved in support of the USAFO (TEG).
2. The test articles are assembled in building 735, and then transported to either the munitions storage area, or directly to the Weapons Test Range (WTR) launch area.
3. The test articles will be transported on a missile pallet that is bolted to a pallet trailer. The articles will be towed behind a truck with a pindle hook hitch. This vehicle will be escorted by two (2) other vehicles in a convoy. The vehicles will consist of a security vehicle in the lead, with emergency flashers on, and one member of the USAFO Test Force aboard. The prime mover, towing the test articles, will be 50 meters behind the first vehicle and will be driven by a member of the USAFO Test Force. The last vehicle following the prime mover by 50 meters will be a security vehicle with emergency flashers on and one member of the USAFO Test Force aboard. This convoy will be used for the transportation of test articles to all destinations.
4. The speed of the convoy will be no more than 15mph on the main base area, and 30mph on the road to the WTR. The lead security vehicle will be responsible to insure that the convoy speed limits are adhered to.
5. The USAFO Security Manager and EOD will be notified at least two days prior to any

We and our 41 IAB TCF partners store and access information on your device for the following purposes: store and/or access information on a device, advertising and content measurement, audience research, and services development, personalised advertising, and personalised content. ✕

Personal data may be processed to do the following: use precise geolocation data and actively scan device characteristics for identification.

Our third party IAB TCF partners may store and access information on your device such as IP address and device characteristics. Our IAB TCF Partners may process this personal data on the basis of legitimate interest, or with your consent. You may change or withdraw your preferences for this website at any time by clicking on the cookie icon or link; however, as a consequence, you may not see relevant ads or personalized content. You may change your settings at any time or accept the default settings. You may close this banner to continue with only essential cookies. [Privacy Policy](#)

[Your Privacy Choices](#)

[Third Parties](#)

- Storage
- Targeted Advertising
- Personalization
- Performance Cookies

Save Preferences

Accept All

Reject Non-Essential

GEORGE C. LEACH
LTC AV
Chief, Army Field Office

PAGE 23

VEHICLE PASSES

EXAMPLE #1: PERMANENT VEHICLE PASS: ISSUED TO CIVILIAN TYPE VEHICLES WHICH ARE GOVERNMENT OR CONTRACTOR OWNED. THE VEHICLE WILL HAVE A JUSTIFIED NEED TO OPERATE ON THE INSTALLATION BEFORE ISSUANCE.

EXAMPLE #2: TEMPORARY VEHICLE PASS: ISSUED TO POVS FOR A SHORT TIME/TEMPORARY BASIS. VALID ONLY FOR ONE HOUR.

EXAMPLE #3: FLIGHTLINE VEHICLE PASS: ISSUED TO GOVERNMENT AND/OR CONTRACTOR OWNED VEHICLES. AUTHORIZES THE VEHICLE TO OPERATE ON THE FLIGHTLINE. EMERGENCY RESPONSE VEHICLES ARE EXEMPT DUE TO THE NATURE OF THEIR DUTIES.

EXAMPLE #4: CONTRACT VEHICLE PASS: ISSUED TO CIVILIAN TYPE VEHICLES UTILIZED BY CONTRACTORS ON A SHORT TIME BASIS.

PAGE 24

Examples #1 and #2: "Permanent Vehicle Pass" and "Temporary Vehicle Pass - One

We and our 41 IAB TCF partners store and access information on your device for the following purposes: store and/or access information on a device, advertising and content measurement, audience research, and services development, personalised advertising, and personalised content. ✕

Personal data may be processed to do the following: use precise geolocation data and actively scan device characteristics for identification.

Our third party IAB TCF partners may store and access information on your device such as IP address and device characteristics. Our IAB TCF Partners may process this personal data on the basis of legitimate interest, or with your consent. You may change or withdraw your preferences for this website at any time by clicking on the cookie icon or link; however, as a consequence, you may not see relevant ads or personalized content. You may change your settings at any time or accept the default settings. You may close this banner to continue with only essential cookies. [Privacy Policy](#)

[Your Privacy Choices](#)

[Third Parties](#)

- Storage
- Targeted Advertising
- Personalization
- Performance Cookies

Save Preferences

Accept All

Reject Non-Essential

(2) YOU ARE HEREBY WARNED THAT UNAUTHORIZED ENTRY ONTO THESE LANDS WILL SUBJECT YOU TO DETENTION AND POSSIBLE ARREST FOR VIOLATION OF STATE AND FEDERAL LAWS. YOU ARE ALSO ADVISED THAT PHOTOGRAPHING OR SKETCHING THE LANDS BEYOND THIS AREA OR ANY ATTEMPT TO DO SO, WILL SUBJECT YOU TO PROSECUTION FOR VIOLATION OF SECTION 795 OF TITLE 18, UNITED STATES CODE.

(3) YOU SHOULD ADDRESS ANY QUESTIONS CONCERNING THIS LAW TO COLONEL CHARLES MYERS OR LTC JOHN JACOBS, USAF LIAISON TO THE DEPARTMENT OF ENERGY, LAS VEGAS, NEVADA. THEIR PHONE NUMBER IS (702) 295-1147.

THIS LETTER AND THE ONE ON THE FOLLOWING PAGE, "INADVERTENT EXPOSURE FORM" SHOULD BE UTILIZED BY THE RANGE PATROLS WHEN THEY ENCOUNTER UNAUTHORIZED PERSONNEL (HUNTERS, MINERS, CAMPERS, etc.) WITHIN THE BOUNDARIES OF THE OUTLYING AREAS OF THIS INSTALLATION. TACT AND DIPLOMACY AS WELL AS OFFICER SURVIVABILITY MUST BE UPPER MOST IN THE MINDS OF THOSE PATROLS WHEN THEY ENCOUNTER SUCH PERSONNEL.

THE ENTIRE TEXT OF THE PUBLIC LAW AND THE AMENDMENT IS AVAILABLE FOR REVIEW IN THE SQUADRON LEARNING RESOURCE CENTER AND IN THE TRAINING OFFICE.

PAGE 27

OATH UPON INADVERTENT EXPOSURE TO CLASSIFIED

We and our 41 IAB TCF partners store and access information on your device for the following purposes: store and/or access information on a device, advertising and content measurement, audience research, and services development, personalised advertising, and personalised content. ✕

Personal data may be processed to do the following: use precise geolocation data and actively scan device characteristics for identification.

Our third party IAB TCF partners may store and access information on your device such as IP address and device characteristics. Our IAB TCF Partners may process this personal data on the basis of legitimate interest, or with your consent. You may change or withdraw your preferences for this website at any time by clicking on the cookie icon or link; however, as a consequence, you may not see relevant ads or personalized content. You may change your settings at any time or accept the default settings. You may close this banner to continue with only essential cookies. [Privacy Policy](#)

[Your Privacy Choices](#)

[Third Parties](#)

- Storage
- Targeted Advertising
- Personalization
- Performance Cookies

Save Preferences

Accept All

Reject Non-Essential

TITLE/ ORGANIZATION

NAME (PRINTED) / SSAN

SIGNATURE

TITLE/ ORGANIZATION

PRIVACY ACT NOTICE

This form is affected by the Privacy Act of 1974. AUTHORITY 10 USC 8012; and EO 9397

PRINCIPAL PURPOSE: To record information on individuals who have inadvertently been exposed to classified security data or information relative to the United States Government.

ROUTINE USE: Affirms intent to safeguard information which could damage national security and to inform individuals of penalties under the Espionage Laws (Title 18, USC, Sections 793 through 798) and the UCMJ.

SSAN: Is necessary to verify identity of signator.

We and our 41 IAB TCF partners store and access information on your device for the following purposes: store and/or access information on a device, advertising and content measurement, audience research, and services development, personalised advertising, and personalised content. ✕

Personal data may be processed to do the following: use precise geolocation data and actively scan device characteristics for identification.

Our third party IAB TCF partners may store and access information on your device such as IP address and device characteristics. Our IAB TCF Partners may process this personal data on the basis of legitimate interest, or with your consent. You may change or withdraw your preferences for this website at any time by clicking on the cookie icon or link; however, as a consequence, you may not see relevant ads or personalized content. You may change your settings at any time or accept the default settings. You may close this banner to continue with only essential cookies. [Privacy Policy](#)

[Your Privacy Choices](#)

[Third Parties](#)

- Storage
- Targeted Advertising
- Personalization
- Performance Cookies

Save Preferences

Accept All

Reject Non-Essential

D. REPORT WITHOUT DELAY:

- (1) ANY SECURITY VIOLATION THAT IS REPORTED/OBSERVED.
- (2) ANY FIRE.
- (3) ANY MEDICAL INCIDENT DEMANDING ATTENTION.
- (4) ANY UNUSUAL OCCURRENCE DEMANDING ATTENTION.

E. PROVIDE THE NECESSARY DOCUMENTATION OF SHIFT FUNCTIONS AND INCIDENTS IN ACCORDANCE WITH CURRENT DIRECTIVES.

F. MAINTAIN AND PROPERLY WEAR FULL UNIFORM IN COMPLIANCE WITH THE ONSITE PROGRAM OPERATING INSTRUCTIONS.

G. MAINTAIN QUALIFICATION WITH ALL WEAPONS ISSUED FOR SECURITY FORCE USE.

H. BE FIRST AID AND C.P.R. TRAINED.

PAGE 29

MISCELLANEOUS INFORMATION
THE RED ROTATING BEACONS, OUTSIDE EACH SYSTEM, ARE ON WHEN THE SYSTEM IS RADIATING. BLUE BEACONS, INSTALLED ON SOME SYSTEMS INDICATE ENERGIZED SERVOS - **STAY CLEAR OF THE ANTENNA**. IF THE ANTENNA IS ROTATING OR POINTED AWAY FROM YOU, THE HAZARDOUS AREA NORMALLY EXTENDS ONLY ABOUT 10 METERS FROM THE SYSTEM. BUT IF THE ANTENNA IS STOPPED OR POINTED AT YOU, THE HAZARDOUS AREA CAN EXTEND AS FAR AS 500 METERS FROM

We and our 41 IAB TCF partners store and access information on your device for the following purposes: store and/or access information on a device, advertising and content measurement, audience research, and services development, personalised advertising, and personalised content. ✕

Personal data may be processed to do the following: use precise geolocation data and actively scan device characteristics for identification.

Our third party IAB TCF partners may store and access information on your device such as IP address and device characteristics. Our IAB TCF Partners may process this personal data on the basis of legitimate interest, or with your consent. You may change or withdraw your preferences for this website at any time by clicking on the cookie icon or link; however, as a consequence, you may not see relevant ads or personalized content. You may change your settings at any time or accept the default settings. You may close this banner to continue with only essential cookies. [Privacy Policy](#)

[Your Privacy Choices](#)

[Third Parties](#)

- Storage
- Targeted Advertising
- Personalization
- Performance Cookies

Save Preferences

Accept All

Reject Non-Essential

THE NEVADA TEST SITE (NTS): FOR SECURITY REASONS IF A CONTRACTOR IS ASKED WHERE HE/SHE WORKS, THEY WILL ANSWER "E.G. & G. AT THE TEST SITE". THEN DECLINE FROM GIVING DETAILS. FOR AIR FORCE PERSONNEL, THEY WORK AT PITTMAN STATION, HENDERSON.

NTS BADGES: THESE BADGES ARE ISSUED TO PERSONNEL WHO HAVE A NEED TO CROSS THE TEST SITE ON OFFICIAL BUSINESS. THE BADGE COLORED INSERTS ARE CHANGED EVERY QUARTER BY EITHER THE PAX PAD PERSONNEL OR AT THE BADGE OFFICE AT MERCURY. THESE INSERTS TRACK IF YOU HAVE BEEN EXPOSED TO ANY RADIATION.

NOTE: DO NOT LET THE NTS BADGE GO THRU THE X-RAY MACHINES.

ANY PROPERTY THAT CAN BE CONSTRUED AS GOVERNMENT OR GOVERNMENT OWNED PROPERTY IS REQUIRED TO HAVE A PROPERTY REMOVAL FORM PROPERLY FILLED OUT AND PRESENTED TO THE SECURITY OFFICER AT THE PAX PAD OR GATE, DEPENDING ON WHERE YOU ARE DEPARTING FROM. PERSONAL ITEMS SUCH AS STATUES, BOOKS OR WORK ASSOCIATED ITEMS LIKE HELMETS OR HELMET BAGS, ETC., ARE NOT REQUIRED TO HAVE A REMOVAL FORM.

WHEN TRANSMITTING OVER THE ADJUSTMENT NET LOCAL CALL SIGNS OR EXACTING DESCRIPTIONS SHOULD NOT BE TRANSMITTED DUE TO THE TRI- STATE TRANSMISSION CAPABILITY OF THE NET.

[DO NOT USE OVER THE AIR]

RACHEL, HI GHWAY 375, NTS, GREENPEACE ROAD

We and our 41 IAB TCF partners store and access information on your device for the following purposes: store and/or access information on a device, advertising and content measurement, audience research, and services development, personalised advertising, and personalised content. ✕

Personal data may be processed to do the following: use precise geolocation data and actively scan device characteristics for identification.

Our third party IAB TCF partners may store and access information on your device such as IP address and device characteristics. Our IAB TCF Partners may process this personal data on the basis of legitimate interest, or with your consent. You may change or withdraw your preferences for this website at any time by clicking on the cookie icon or link; however, as a consequence, you may not see relevant ads or personalized content. You may change your settings at any time or accept the default settings. You may close this banner to continue with only essential cookies. [Privacy Policy](#)

[Your Privacy Choices](#)

[Third Parties](#)

- Storage
- Targeted Advertising
- Personalization
- Performance Cookies

Save Preferences

Accept All

Reject Non-Essential